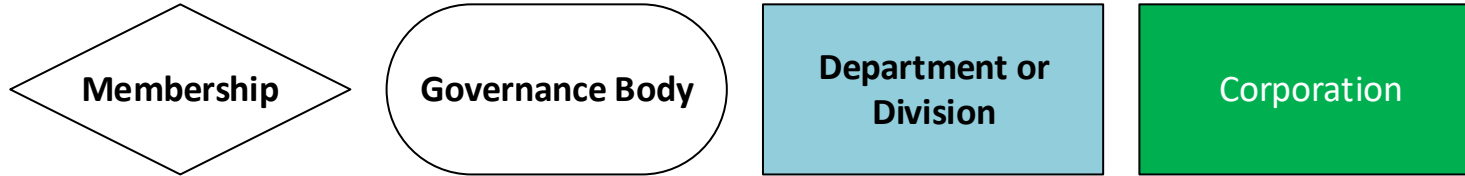


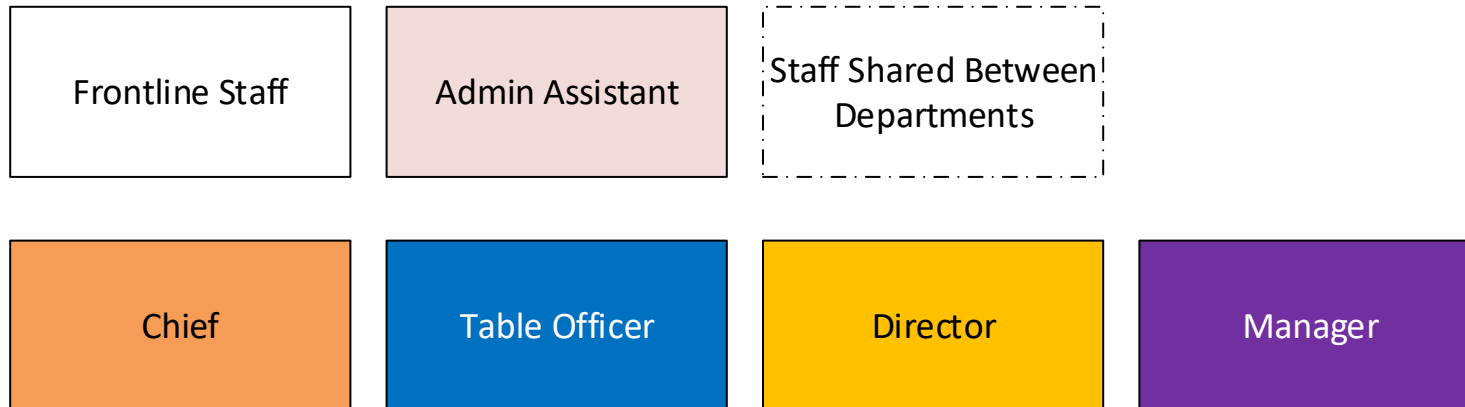


## Visual Guide

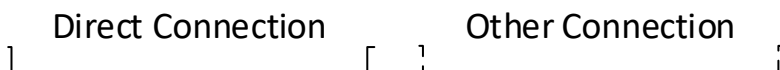
### Groups



### Roles

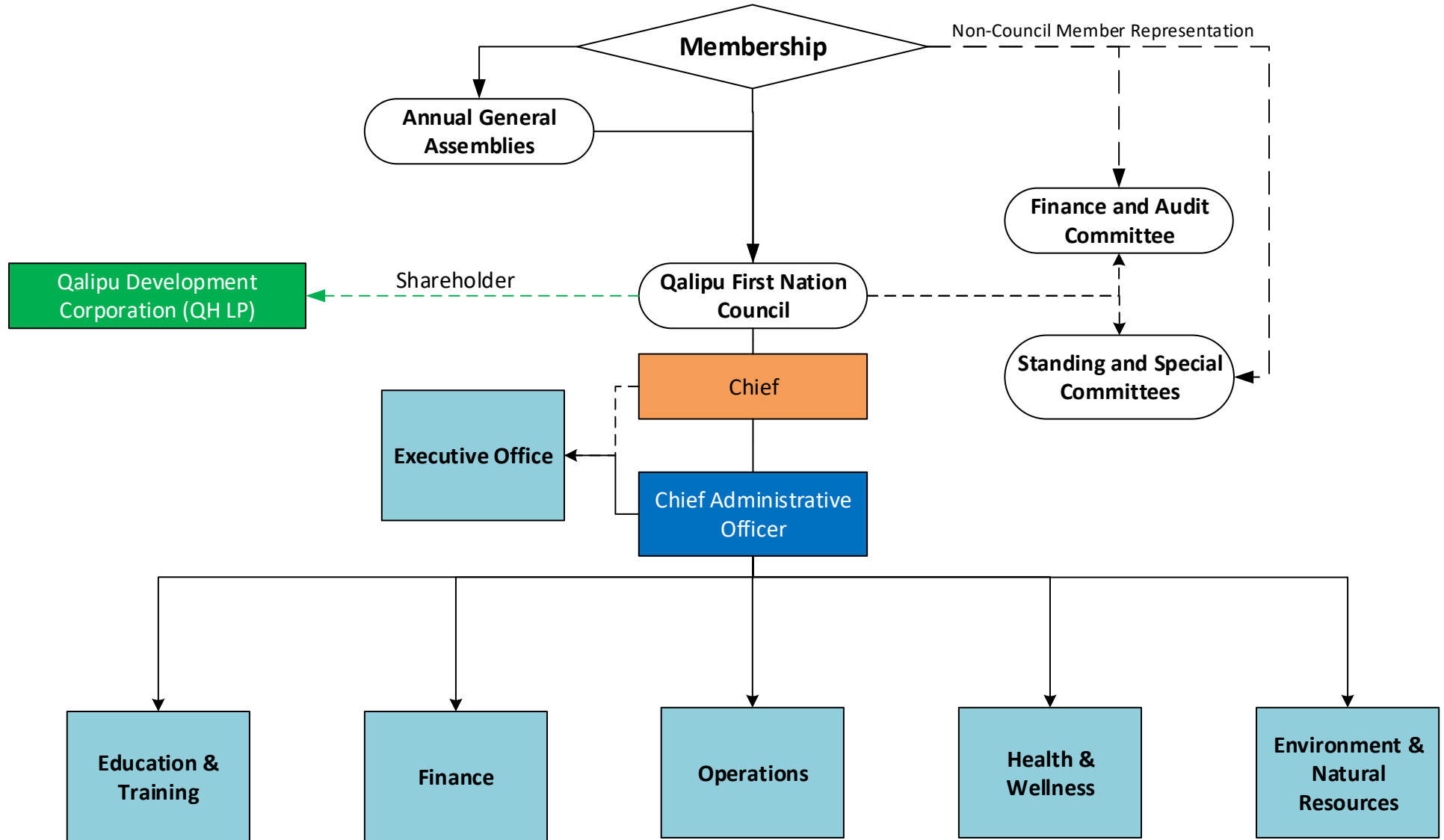


### Relationship



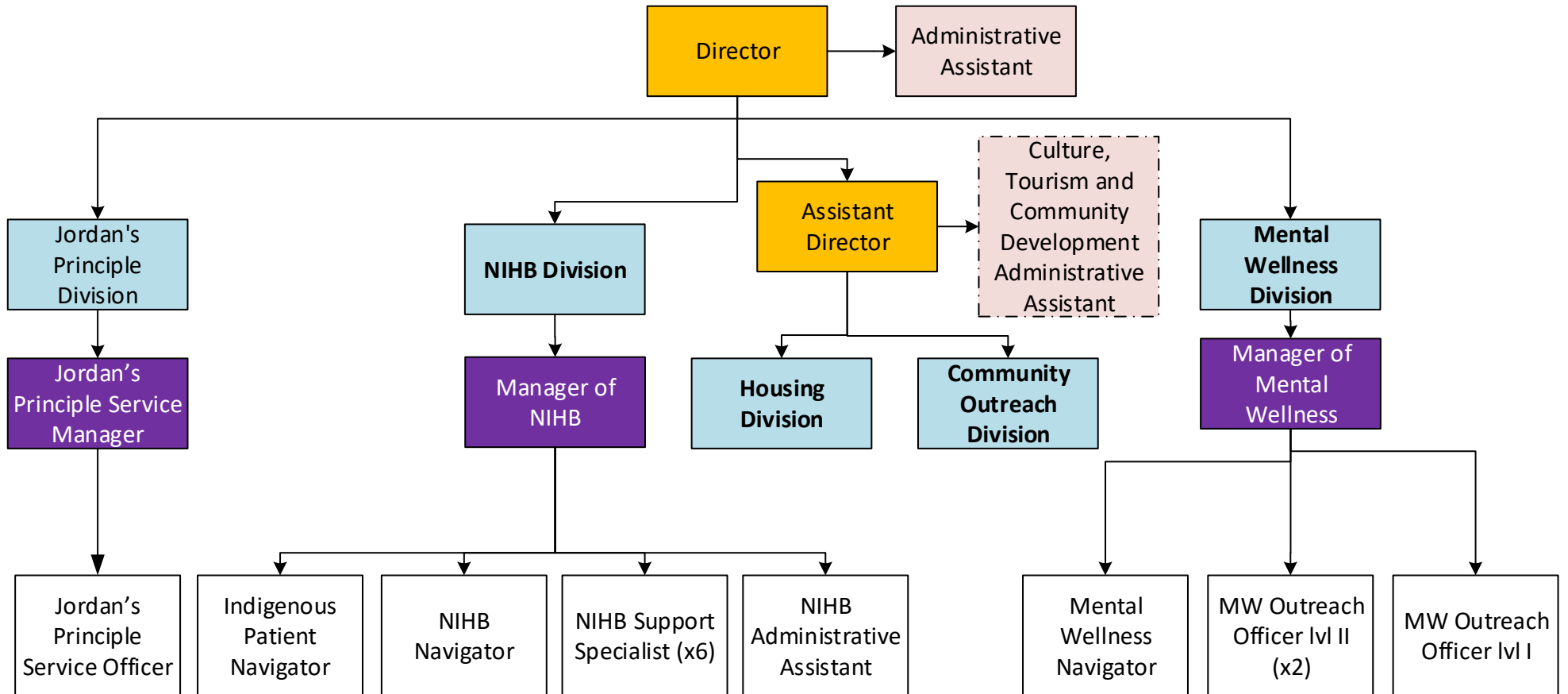


### Overview Chart

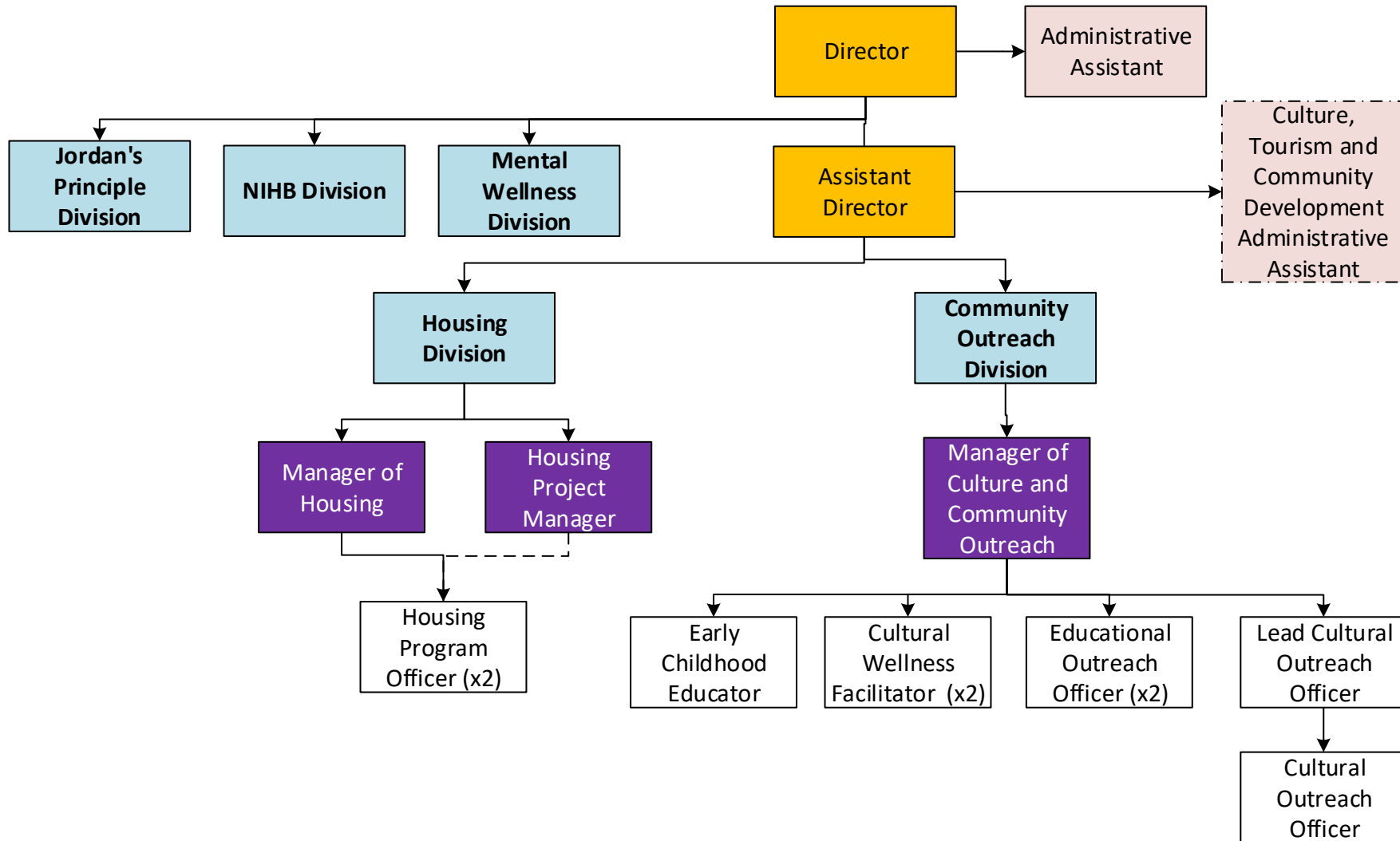




## Health and Wellness — Part I



## Health and Wellness — Part II

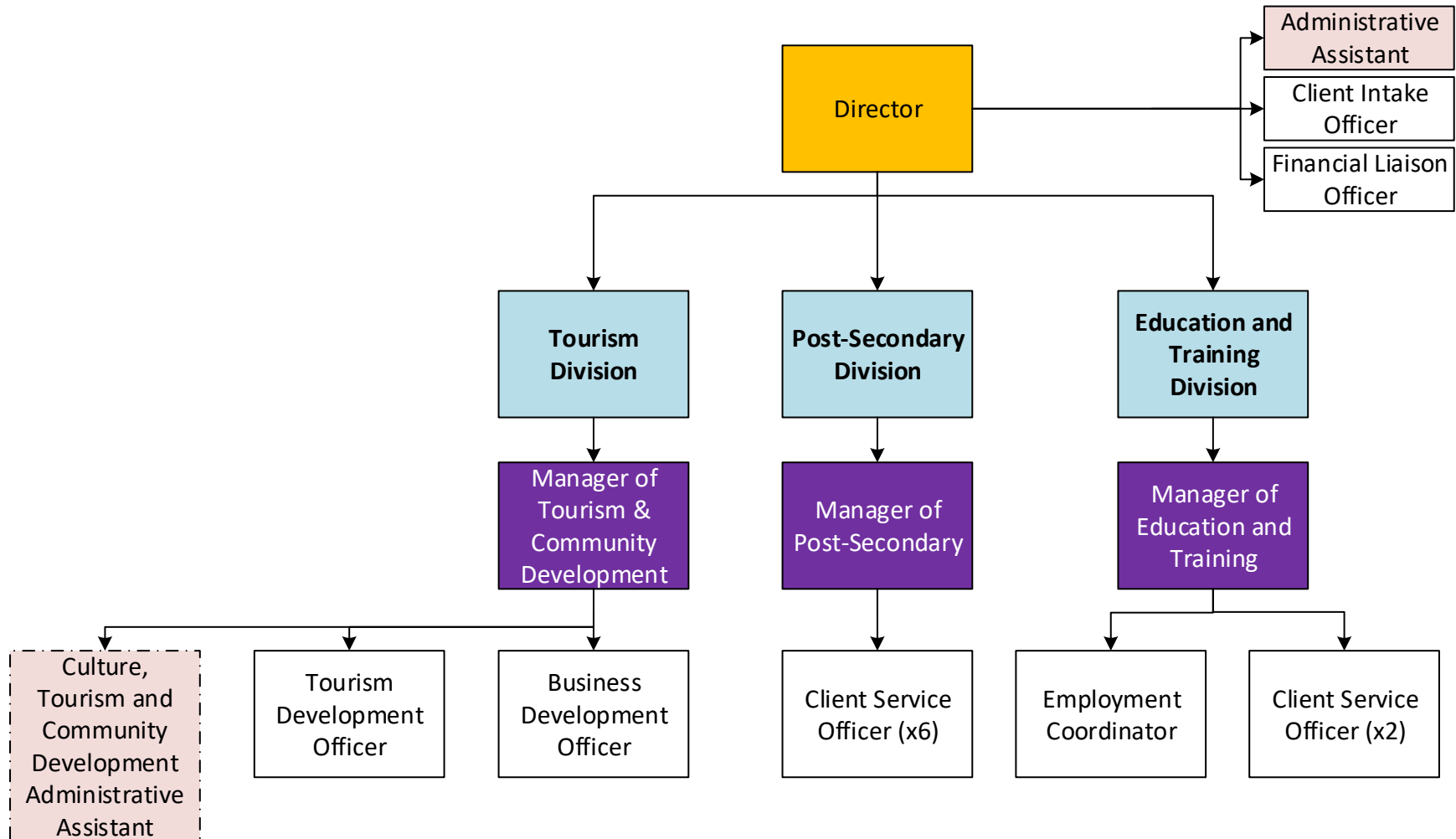


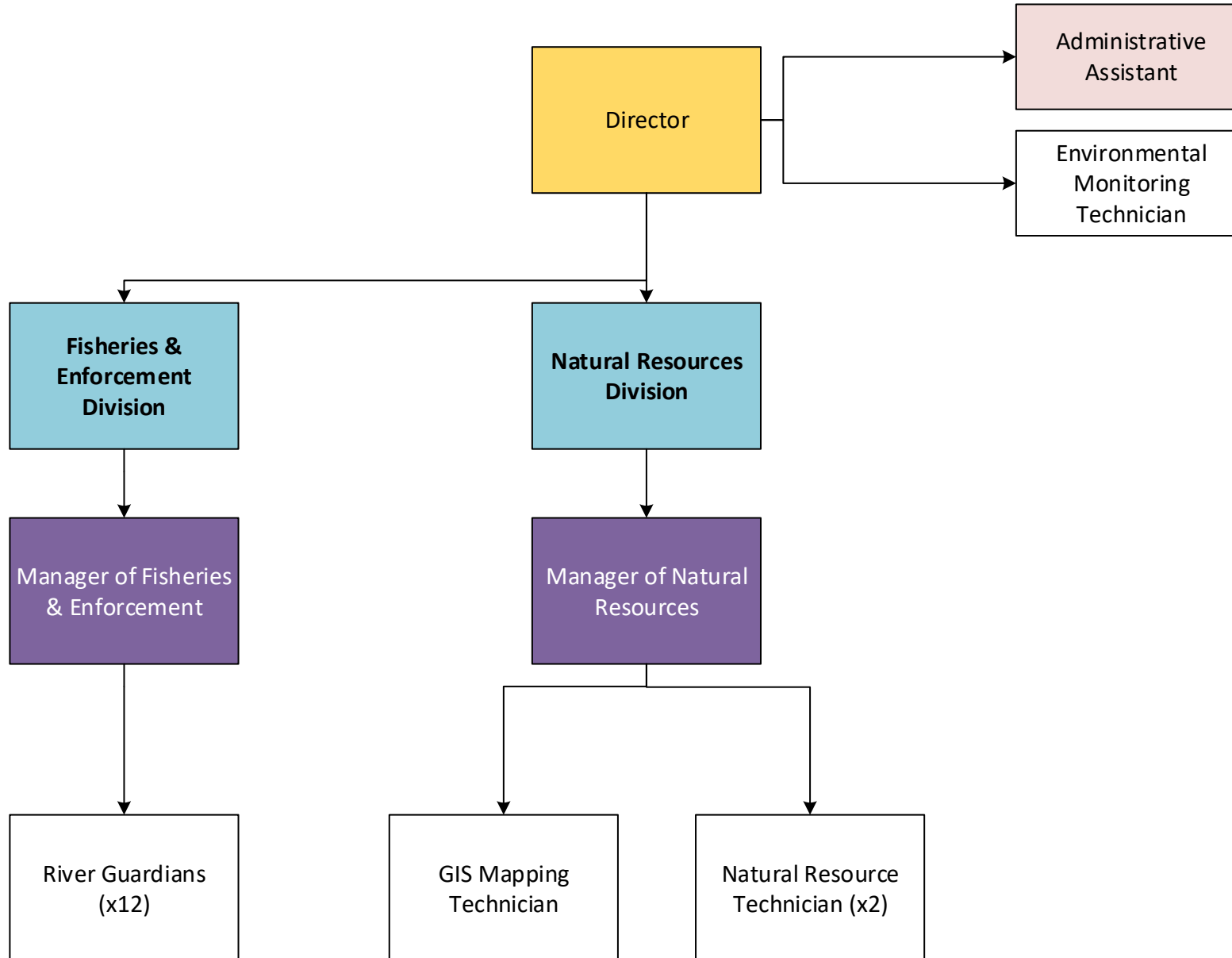
**Notes:**

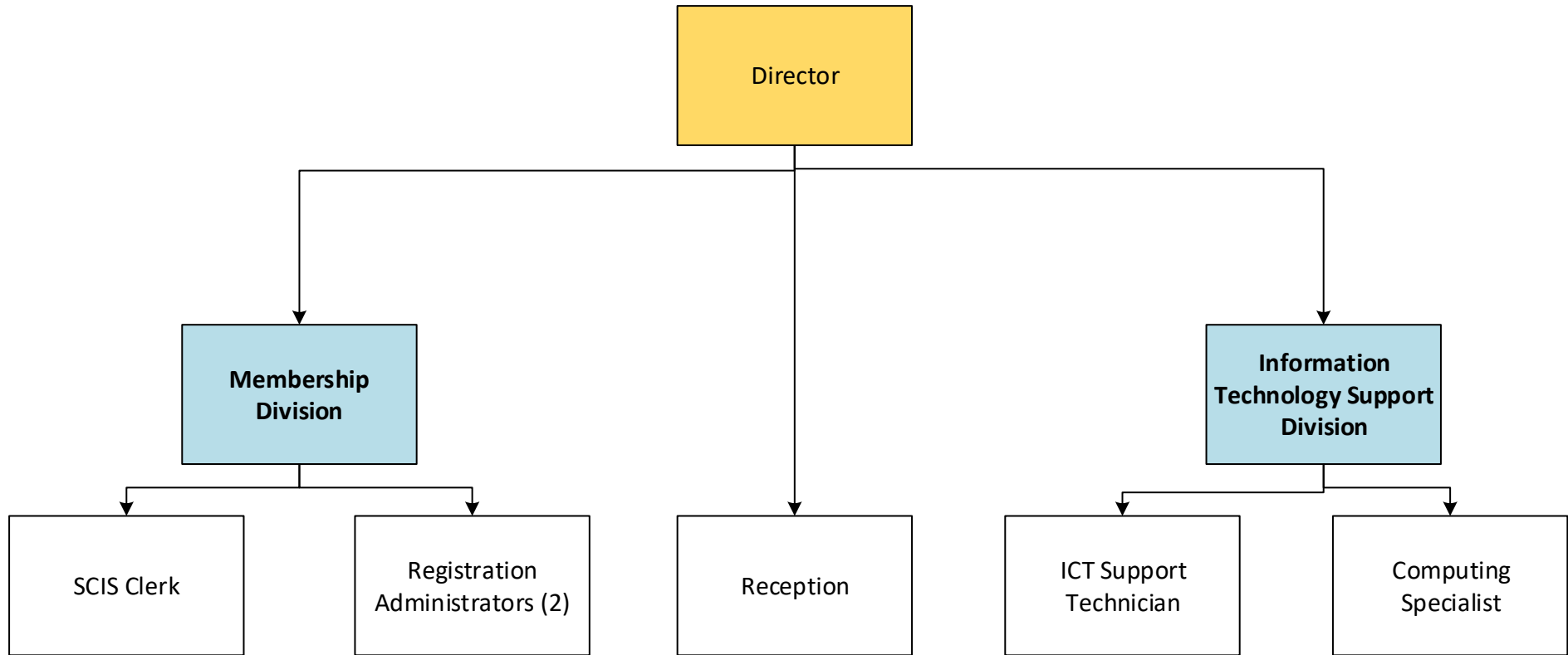
- Housing Project Manager serves as Division Manager in absence of the Manager of Housing.
- Lead Cultural Outreach Officer is the best practice lead for the Nation's staff engaged with culture and protocol issues.



## Education & Training





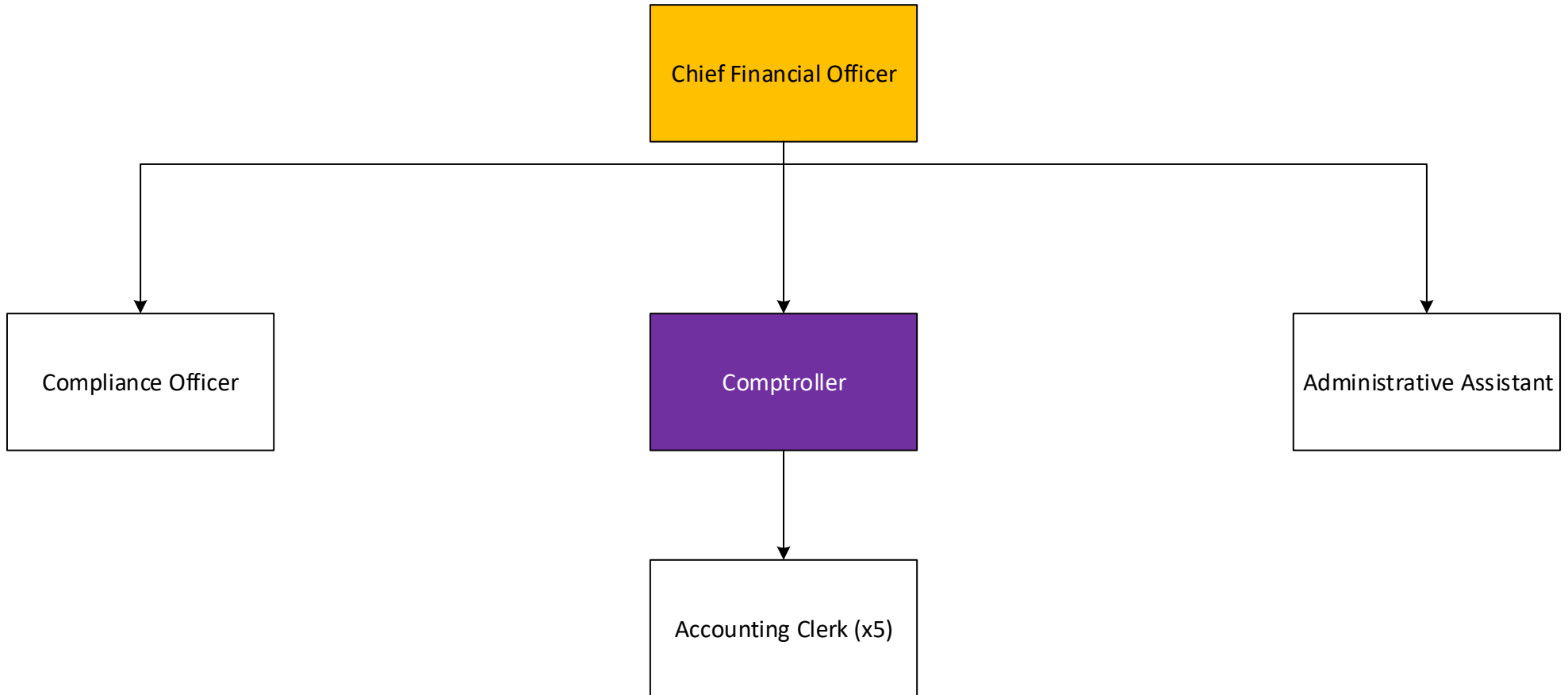


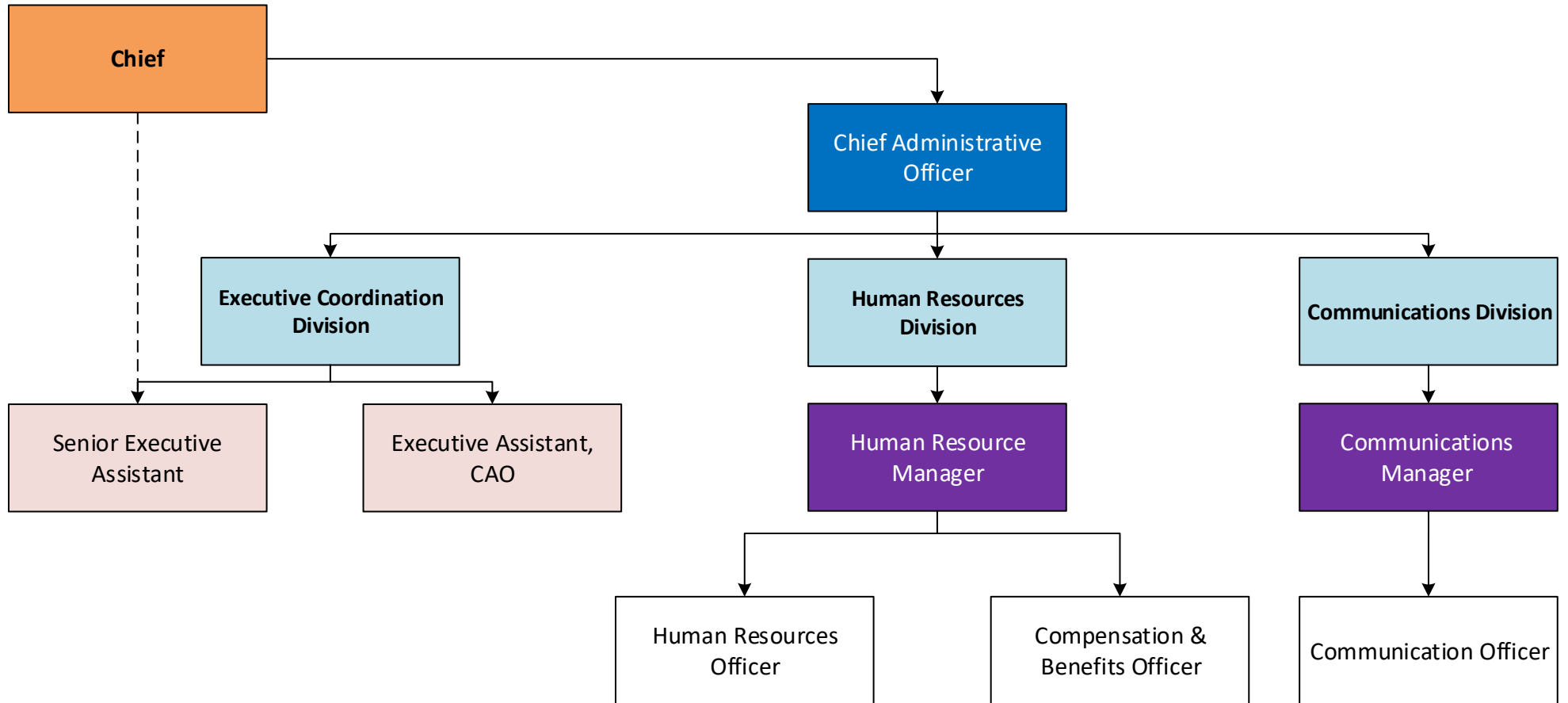
**Notes:**

- ICT and Communications (Executive Office) work collaboratively on common issue areas.



# Finance





**Notes:**

- Chief provides practical direction to the Senior Executive Assistant (as the EA for Chief and Council), CAO provides HR support and direction (as EA within wider Administration).
- Senior Executive Assistant is the best practice lead for the Nation's Administrative Assistants.
- Communications Manager is the best practice lead for the Nation's staff engaged with Communications duties.
- Communications and ICT (Operations) work collaboratively on common issue areas.