

Maw-pemita'jik Qali'pu'k

Pronunciation: [mow bemmy daa jick ha li boog]

Meaning: The caribou are travelling together

On October 23, 2015, Vote to Elect Your Leaders

Position	Candidates
Chief	Mitchell, Brendan Sheppard, Brendan Snook, Shane
Vice-Chief (Western)	Samms Hurley, Erica Young, Hayward George
Vice-Chief (Central)	Bouzanne, Joseph Mills, Terry (Jack)
Benoit's Cove Ward Councilor	Barnes, Kevin Ford, Blain White, Bernard
Corner Brook Ward Councilor	Dicks, Brian White, Gregory Dahl
Exploits Ward Councilor ELECTED BY ACCLAMATION	Barker, Andrew (Andy)
Flat Bay Ward Councilor	Bennett, Ben Simon, Dean Joseph
Gander Bay Ward Councilor ELECTED BY ACCLAMATION	Francis, Calvin
Glenwood Ward Councilor	Skeard, Francis Stanford, Constantine
Port au Port Ward Councilor ELECTED BY ACCLAMATION	Benwah, Jasen
Stephenville Ward Councilor	Alexander, Gerard Joseph Bennett, Kenneth Cormier, Don White, Gerald Joe Young, B Stefan
St. George's Ward Councilor	White, Arlene White, Karen Maria



Photo by Qalipu member Megan Webb

Inside this issue

Qalipu Four Year Anniversary.....	2
Strategic Plan Finalized	3
Quarterly Meeting of Council.....	4-5
Managers Report: Protect Yourself During Cold and Flu Season.....	6
Focus on Healthy Communities...	7
Employee Profile: Meet Rebecca	8
Marine Invaders.....	9
Keep in Touch and Calendar of Events.....	10

Special points of interest

- Event, and business opportunity posters, page 4-5
- YouTube Video featuring the Qalipu 2015 Green Team. Click to watch on page 9
- Calendar of Events: click on an item on the calendar to see more about the event. Pg. 10

Happy Anniversary!

September 22, 2015, marked four years since the Qalipu Mi'kmaq First Nation Band had been formed. While there has been an unfortunate delay in establishing the final founding members list, the Band has been successful at establishing a strong foundation for its membership which will last long into the future. Here are a few highlights:

- Direct employment with the Band for more than 50 individuals and four office locations across the province
- \$24 + million dollars paid out in education funding to thousands of members for post-secondary diploma, degree and masters programs.
- \$40 + million dollars in health benefits have been paid out to membership. We continue to pursue continued growth in this area with the recent hiring of a Manager of Health Services and the development of an Integrated Health Strategy
- Assistance for more than 600 members with wage subsidies, self-employment assistance and youth employment programs.
- Opening of the Qalipu Strategic Partnership Office to foster meaningful relationships with communities, government and industry stakeholders. Many partnerships have been founded through this office, most notably with Emera NL and the signing of a socio-economic agreement that continues to benefit members and member owned businesses.
- Establishment of the Service Qalipu Department to deliver member services such as Community Economic Development, Culture & Heritage, and Natural Resources. This department has recently seen the development of a Tourism Strategy & Implementation Plan and an Arts and Crafts Sector Plan.
- Development of the Qalipu Cultural Foundation to support cultural documentation, and promote the involvement of youth and elders in cultural activities within the Band including educational outreach, celebration of special days and powwow support.
- Establishment of the Qalipu Development Corporation that has seen such successes as the Mi'kmaq Commercial Fishery which provides for 11 inshore fishing licenses and one 65 foot enterprise, Corner Brook based rental properties which has earned \$1.8 million, and a number of companies developed under the Emera NL partnership and the Maritime Link Project.
- Development of the ginu membership database which is used to communicate with members, and connect them with employment, and targeted training opportunities
- Founding of the Qalipu Business Network to help facilitate access of member owned business to local procurement opportunities. There are currently more than 200 member owned businesses active in the Qalipu Business Network and our annual Aboriginal Business Forum, Mawio'mi.



Strategic Plan Finalized

The business of Qalipu is governed within the framework of a Strategic Plan. This plan, which is renewed every five years, is developed through contributions from our core teams, Chief and Council and Band members.

Earlier this year, planning sessions were held with the front line staff who are in frequent contact with membership: Work Force Qalipu, Service Qalipu and the Operations department. They presented their ideas for future direction to the Chief and Council.

Chief and Council have since met to consider those ideas put forth by Qalipu staff and to spend a day prioritizing future direction for the Band, and commit to an agenda that will best serve the membership.

Members of the Band responded in record numbers to the third phase of the plan's development, a survey to identify what membership feel is the right direction for our Nation to continue to grow and thrive.

Of some 1100 survey responses the Band has found some common messages that it will act on. For example, a large percentage of membership indicated that they felt there were not enough meetings with Ward Councilors in their wards. This issue was brought before council and all have agreed to make it a priority to hold at least one ward meeting annually.

Members also indicated not wanting to travel to Conne River to make on reserve, tax free purchases. Qalipu has been doing research and planning on how to establish an urban reserve in one of our wards. This has been done elsewhere in Canada and the Band will pursue this option diligently.

Finally, aboriginal rights was a strong topic of interest for Qalipu membership. The Band has sought out a legal opinion on how to move forward to pursue aboriginal rights such as fishing, and hunting. The Band has been advised that it will be a lengthy process, if at all possible. However, the Band is committed to putting in the work to get there. Like the process of recognition which took 40 years, the Band will not give up on this initiative which is high on the priority list of the membership.



October 23 Voting Locations

Benoit's Cove	Community Hall, Benoit's Cove
Corner Brook	St. John The Evangelist Parish Hall, Main Street, Corner Brook
Exploits	United Memorial Church Parish Hall, Grand Falls-Windsor
Flat Bay	Community Centre, Flat Bay
Gander Bay	Community Centre, Wings Point
Glenwood	Fire Hall, Glenwood
Port au Port	Leisure Club, Port au Port
Stephenville	Stephenville Lions Club, Stephenville
St. George's	St. Joseph's Parish Hall, St. George's

October 17 Advance Poll

Corner Brook	St. Michael and All Angels Parish Hall, Park Drive,
Stephenville	Stephenville Lions Club, Ste-
Exploits	Seniors Recreation Centre, Edwards Place, Grand Falls-

Both the Election Day Polling stations and the Advance Poll stations will be open from 12:01 pm to 8:00 pm

[To view the document summarizing the five year strategic plan, click here.](#)

Quarterly Meeting of Council

September 12, 2015, Corner Brook

"Oh Great Spirit, as we bow our heads before you... let us speak from the heart. Let us come together in unity to work for the people. Oh Great Spirit be with those who need you. Our loved ones who may be sick or in need..." -opening prayer

Newly re-elected Exploits Ward Councilor Andy Barker asks about the letter written to The Town of Grand Falls-Windsor regarding the Shanaditit monument and park.

"This letter was sent to the Town of Grand Falls-Windsor on June 8 but, it was not acknowledged", said Exploits Ward Councilor Andy Barker who has a media contact that frequents the public portion of Town Council meetings.

The letter he was referring to was one requesting that the Town restore the Shanaditit Monument at a park which was also named in her honour, along with the monument, in 1967. The Town of Grand Falls-Windsor has renamed the park "Centennial Field Complex" and the monument has fallen into a state of disrepair. As of the date of this newsletter the Chief has not had a written response from the Town of Grand Falls-Windsor. You are invited to write your own letter about this issue to: The Town of Grand Falls-Windsor, PO Box 439, 5 High Street, Grand Falls-Windsor, NL, A2A 2J8

Councilors discuss role of Finance Committee

Several Councilors had some back-and-forth about how the Finance Committee, made up of Councilor's and members-at-large, could take a more active approach in the Band's finances.

CEO Annie Randell said that the first role of the Finance Committee is to be a second set of eyes for the membership and for Council. She said this means ensuring that the budget is balanced, and remains that way throughout the year. She noted that if the Finance Committee notices variances between approved budgets and expenditures to date, they should question the Finance department to get answers, and bring those answers back to Council. Randell added that the Finance Committee is likely the most important of all the committees.

Renée Dyer, Manager of Health Services, presents Operational Plan to Council.

Newly hired Manager of Health Services, Renée Dyer, was on hand to introduce herself to Council as well as to present the Annual Operating Plan for the Health Services Division. Council was impressed by how quickly Dyer has been able to take on her new role with Qalipu.



Get Your Question In

Let's Talk About Health will be a monthly Health Bulletin, posted on our website and emailed to members, that will answer your health questions.

Members are invited to pose questions on topics such as: food and nutrition, physical activity, and healthy lifestyle; where to access health services and providers; and find out what's available to you through the Non-Insured Health Benefits (NIHB) and the Qalipu Health Services division.

This Question & Answer themed health bulletin will debut on November 20, 2015. For now, give Renée something to ponder and prepare by sending your questions to:

letstalkabouthealth@qalipu.ca

Ursula Johnson:
Mi'kwite'tmn
(Do you remember?)



Organized by St. Mary's University Art Gallery and curated by Robin Metcalfe in collaboration with Unama'ki College

Sept. 24 to Dec. 12

OPENING RECEPTION: Thurs., Sept. 24, 4:30 to 8 p.m.

ARTIST PERFORMANCE:

Sept. 24, 10:30 a.m. to 2:30 p.m.

Sept. 25, 26, 12 to 5 p.m.

Sept. 27, 10:30 a.m. to 10:30 p.m.

FORUM ON ABORIGINAL IDENTITY AND CREATIVE EXPRESSION.

Sun., Sept. 27, 1 to 3 p.m.

Sept. 27, 1 to 3 p.m.

Sept. 27, 1 to 3 p.m.

Sept. 27, 1 to 3 p.m.

Sept. 27, 1 to 3 p.m.

Sept. 27, 1 to 3 p.m.

Sept. 27, 1 to 3 p.m.

Sept. 27, 1 to 3 p.m.

Sept. 27, 1 to 3 p.m.

Sept. 27, 1 to 3 p.m.

Sept. 27, 1 to 3 p.m.

Sept. 27, 1 to 3 p.m.

Sept. 27, 1 to 3 p.m.

Sept. 27, 1 to 3 p.m.

Sept. 27, 1 to 3 p.m.

Sept. 27, 1 to 3 p.m.

Sept. 27, 1 to 3 p.m.

Sept. 27, 1 to 3 p.m.

Sept. 27, 1 to 3 p.m.

Sept. 27, 1 to 3 p.m.

Sept. 27, 1 to 3 p.m.

Sept. 27, 1 to 3 p.m.

Sept. 27, 1 to 3 p.m.

Sept. 27, 1 to 3 p.m.

Sept. 27, 1 to 3 p.m.

Sept. 27, 1 to 3 p.m.

Sept. 27, 1 to 3 p.m.

Sept. 27, 1 to 3 p.m.

Sept. 27, 1 to 3 p.m.

Sept. 27, 1 to 3 p.m.

Sept. 27, 1 to 3 p.m.

Sept. 27, 1 to 3 p.m.

Sept. 27, 1 to 3 p.m.

Sept. 27, 1 to 3 p.m.

Sept. 27, 1 to 3 p.m.

Sept. 27, 1 to 3 p.m.

Sept. 27, 1 to 3 p.m.

Sept. 27, 1 to 3 p.m.

Sept. 27, 1 to 3 p.m.

Sept. 27, 1 to 3 p.m.

Sept. 27, 1 to 3 p.m.

Sept. 27, 1 to 3 p.m.

Sept. 27, 1 to 3 p.m.

Sept. 27, 1 to 3 p.m.

Sept. 27, 1 to 3 p.m.

Sept. 27, 1 to 3 p.m.

Sept. 27, 1 to 3 p.m.

Sept. 27, 1 to 3 p.m.

Sept. 27, 1 to 3 p.m.

Sept. 27, 1 to 3 p.m.

Sept. 27, 1 to 3 p.m.

Sept. 27, 1 to 3 p.m.

Sept. 27, 1 to 3 p.m.

Sept. 27, 1 to 3 p.m.

Sept. 27, 1 to 3 p.m.

FUNDRAISER
10th Annual Powwow

Sunday November 1st 2015 @ 2:00pm
Located at: The Stephenville Lions Club



COME OUT & SUPPORT!

Quarterly Meeting of Council

Dyer continued... Since being hired just one month prior to the meeting of Council Dyer has made progress on the Health Development Strategy, pursued funding for a Health Needs Assessment, held meetings with staff of the health division, as well as established a Health Services Committee. Dyer has also provided content for Maw-pemita'jik Qali'pu'k, Qalipu's monthly newsletter, and come up with a plan to connect with more members, and enhance health promotion, via "Let's Talk About Health", a monthly Q & A style health bulletin that will be launched on November 20.

Language could be clearer in Privacy Policy

Upon review of the new privacy policy regarding the safeguarding of private information of members, it was suggested that the newly developed policy was too wordy, thus leaving too much room for misinterpretation. It was decided that the policy would be re-worked and brought back to council before presenting it to membership.

Clarification sought on Band's position on fracking

One Councilor questioned that the Strategic Partnership Office August report indicated that there was a meeting held to discuss a Memorandum of Understanding (MOU) with an oil development company. He emphasized that the membership does not want the Band to be involved in fracking even if it provides jobs and local development. CEO Annie Randell clarified that the Band had been approached by the oil development company, and the meeting was held but Chief Sheppard was clear on the position of the band as per the direction of council, that Qalipu is waiting for the Province to complete its review, and public consultations, before the Band can make an informed decision and certainly no agreement were entered.

The Strategic Plan, Outgoing central region Vice-Chief Randy Drover takes a stand

The final draft of the Strategic Plan was presented for Councils review. This document is now online. [Click here to view it.](#) One element of the Strategic Plan that was removed by Chief and Council was "to determine feasibility and sustainability of a cultural centre in Corner Brook."

The question was asked as to whether the Band had received the grant to conduct a sustainability study to look into building a cultural centre in Corner Brook. The sought after funding, to date, has not been approved.

"The study alone would cost thousands of dollars. We need to take this goal out of there", said central region Vice-Chief Randy Drover. "We don't need big fancy centres to promote and practice our culture. We can build on assets we already have. Wigwam Point, the K'takmkuk Mi'kmaw Museum in St. George's, and others."

Drover's logic was on point with the thinking of all members of the Council. It was agreed that this goal should come out of the Strategic Plan at this time.

BE THE FIRST TO KNOW

As Qalipu Election 2015 votes are counted and the winners are declared, we will share the results on our Facebook page **Qalipu Mi'kmaq First Nation Band** and on our Twitter feed **@Qalipu2011**



Invitation to Tender– Snow Clearing Services

Qalipu Development Corporation (QDC) requires snow clearing services for 1 & 3 Church Street, Corner Brook, NL. Services to include regular snow clearing to be performed from December 1, 2015 through March 31, 2016.

Services requested include: plowing attached parking areas, shoveling of walkways and emergency exits and applying salt or sand when needed.

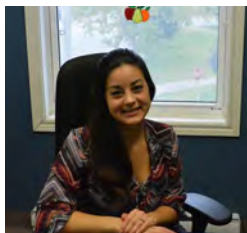
Please provide bid to QDC in writing clearly marked "Snow Clearing Tender". Proposals must be received at 3 Church Street, Corner Brook, NL A2H 2Z4 by 4pm on October 23, 2015. Please note that members of the Qalipu Mi'kmaq First Nation Band are encouraged to apply.

Fight the Flu:

Protect yourself, your family, and your community

Flu Prevention Tips

- ◆ Washing your hands frequently with soap and warm water.
- ◆ Cough and sneeze into the bend of your arm or a tissue, not into your hand.
- ◆ Use hand sanitizer for extra protection.
- ◆ Avoid touching your eyes, nose, and mouth with your hands.
- ◆ Cleaning and disinfecting things and surfaces that a lot of people touch, like counter tops, door knobs, and TV remotes.
- ◆ Keep your immune system strong: eat healthy foods and be physically active.
- ◆ Staying at home, if you get sick, until your symptoms are completely gone.



The flu season is now upon us, and will last through the fall and winter. Protecting yourself from the flu will not only reduce your risk of getting sick, but will also lessen the chance of spreading the flu to others at home, work, and in the community.

Influenza, or the “flu” is contagious and spreads quickly and easily. The worst case scenario is that you can pass the flu on to others who

may be at risk of serious complications, before you even know you are sick. Did you know that the flu is responsible for about 12,200 hospitalizations and 3,500 deaths per year and can affect everyone, including those who are healthy?¹

While all Canadians are encouraged to get the flu shot, high risk individuals or those people capable of transmitting influenza to those at high risk remain the top priority for influenza immunization. Influenza vaccination is available to all residents of Newfoundland and Labrador ages 6 months or older, but we know that it is particularly important for:

- Children under the age of 5
- People 65 years of age or older
- Pregnant women
- People with chronic conditions such as: heart disease, diabetes, severe obesity, kidney disease, liver disease, asthma and chronic lung disease, cancer and immune-compromising conditions, neurological disorders, blood disorders
- Aboriginal people
- People who are residents of nursing homes or other chronic care facilities

Flu Vaccination Facts

You need to get vaccinated every year

The effects of the flu vaccine can wear off, so you need to get a new one every year to stay protected¹.

Flu virus change each year. Experts create a new vaccine to protect you each flu season.

You cannot get the flu from the flu vaccine

The viruses in the flu vaccine are either killed or weakened and cannot give you the flu.

The flu vaccine is safe

The flu vaccine has benefited millions of Canadians since 1946.

Most people don't have reactions to the flu vaccine; those who do may have soreness, redness, or swelling at the injection site.

Severe reactions to the vaccine are extremely rare.

How To Wash Your Hands



1 Wet Hands



2 Apply Soap



3 Rub All Surfaces



4 Rinse



5 Dry



6 Turn Off Tap With Paper Towel

Newfoundland & Labrador
HealthLine 1-888-709-2929

Approved with the permission of Newfoundland & Labrador Health

Newfoundland
Labrador
www.gov.nl.ca/health

[Click Here to Find Provincial Flu Shot Clinic Near You](#)

Adapted from the Public Health Agency of Canada's ¹Know the Flu Facts and ²Protect Yourself and Others fact sheets

Qalipu Concerned with Health of Communities

A National team of independent researchers, led by Dr. Michael Quinn, Mount Royal University, and Dr. Mary-Ellen Tyler, University of Calgary, have requested funding from the Canadian Water Network to explore prevention and mitigation strategies to address impacts of hydraulic fracturing on Aboriginal communities, and has approached Qalipu to participate in an advisory capacity. Brendan Sheppard, Chief of the Qalipu Mi'kmaq First Nation Band, has appointed Qalipu's CEO, Annie Randell, with the support of the Qalipu Natural Resource division, to go forward as an advisor and key player on the proposed interdisciplinary research team.

The overall purpose of the research is to explore prevention and mitigation of threats to Aboriginal community health including the avoidance of environmental and cultural harm. In addition, the research will explore opportunities for enhanced social-ecological resilience in the face of resource development associated with petroleum extraction that includes hydraulic fracturing. Project leads have identified a national team of 26 key players with expertise in areas such as natural and social sciences, and public and environmental health. A number of First Nations groups will assume expert roles as well as participate as advisors and community liaisons to effectively build modern scientific research using the knowledge and culture of Indigenous peoples.

"Over the past several years, Qalipu has been approached by a number of companies interested in oil development on the west coast of Newfoundland. While Qalipu recognizes that oil development in the region may bring economic diversification and much needed employment, the main concern for Qalipu is that the health of our communities is not negatively impacted. When the request for our participation on a national research team looking to address the impacts of hydraulic fracturing on Aboriginal communities came across my desk, it was an easy answer. Yes, we want to educate ourselves." Chief Sheppard said.

Chief Sheppard added that, while attending an event on October 1 in Port au Port, a member of the Band suggested to him that a survey be done to see where members stand on the question of fracking. He said that members can expect to see this survey in the very near future.



Crowds Gather at Shoal Point

Many from western Newfoundland are making sure their concerns are heard. Early this September nearly 100 people gathered at Shoal Point on the Port au Port Peninsula where oil has been found in the water. Many believe it has been leaking for more than a century from old abandoned oil wells, and they want something done about it. Like the contentious issue of fracking on the west coast, these people want the world to know that they care about the earth, and they will stand together to defend it.

Qalipu Cultural Foundation



The Qalipu Cultural Foundation is hosting its first big fundraising event—the Ke'tipnemk

(Harvest) Fundraising Dinner and Silent Auction—Oct 24th, 2015, at Jennifer's Restaurant in Corner Brook. The inaugural event will feature a silent auction with artwork of well-known indigenous people from across the island, and an elegant three course meal of traditional and modern cuisines will be served. Cultural sharing, including songs and storytelling, will take place throughout the evening. The Foundation's mandate is to ensure cultural documentation, promote the involvement of youth and Elders in cultural activities within the Band, and to inspire Mi'kmaq people to proudly embrace their heritage through participation in programs, workshops and other initiatives of the Foundation.

Mitch Blanchard, Resource Coordinator for the Qalipu Mi'kmaq First Nation, has been working with the Cultural Foundation since its inception in 2013. Blanchard said "I'm so encouraged by the show of support we have seen from our communities with donations of artwork, business sponsorships and the generosity of families and individuals has also been outstanding."

Blanchard added, "I'm excited to see the Foundation taking steps toward sustainability as well as developing initiatives that will engage members and the general public in learning about Mi'kmaq Culture. With everything we have planned for the event, and the fantastic artwork, it's sure to be a great evening."

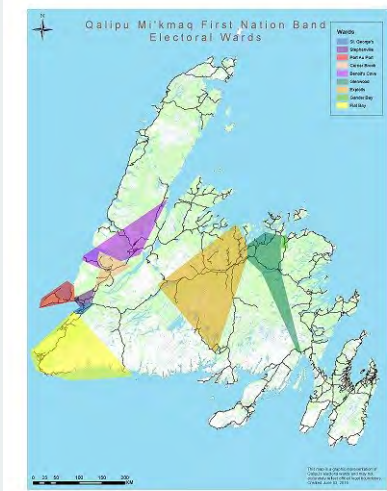
Tickets can now be purchased for \$45.00. Debit and credit card payments can be processed at the Qalipu office or over the phone. For further information please contact Mitch Blanchard
mblanchard@qalipu.ca or (709) 634-8046
or Nicole Companion
ncampanion@qalipu.ca or (709) 634-8043

Special rates are available for guests coming in from out of town and needing hotel accommodations. Use the promotional code: "Qalipu Harvest" at The Glynmill Inn (1-800-563-4400) or the Greenwood Inn and Suites (1-800-399-5381) and receive a special rate of \$115/night single or double.

Employee Profile

Meet Rebecca

GIS at Work



One of Rebecca's first projects at Qalipu was to develop a map of Newfoundland that demonstrates the areas of our nine wards



A colleague from the Natural Resource Division snapped this shot of Rebecca out and about assisting the team with Killifish research.

In February, the Qalipu Natural Resources Division was happy to add a new member to their team. Rebecca Ryan is the GIS Mapping Technician for the Qalipu Mi'kmaq First Nation Band. Native to Corner Brook, Rebecca is pleased she was able to complete all of her post-secondary education in her hometown, as well as find employment in her field of work.

In 2013 Rebecca obtained a Diploma in Information Technology: Computer



Systems and Networking, as well as a Post-Diploma in Geographical Information Systems (GIS) Applications, from College of the North Atlantic. After Graduation, Rebecca began working with a local GIS company in collaboration with Corner Brook Pulp and Paper Ltd., and quickly realized GIS is the job for her. Rebecca is highly skilled in cartography and preparing maps for field work, as well as scientific data reporting for the Qalipu Natural Resources Division. Rebecca quickly learns new skills and embraces new technology due to her formal training and interest in Information Technology.

Here at Qalipu, Rebecca is responsible for the collection, analysis, and display of spatial data; as well as working in both office and field settings to develop, implement, and report on a wide range of projects. Rebecca continues to make improvements to the role of Geographic Information Systems in many of Qalipu's current and upcoming projects.

"The elements of Geography are often overlooked in many of the projects we do. Once we get things on a map, our eyes open, we can start to understand relationships we didn't know existed" Rebecca said.

Since being hired, Rebecca has spent the majority of her time facilitating Qalipu's Traditional Use Study (TUS) as well as completing 'overlap analysis' to determine the impact various developments have on traditional lands as reported in previous TUS studies. Rebecca is full of exciting ideas for Qalipu's GIS program and looks forward to new challenges in years to come.

While not at work, Rebecca loves being in the outdoors and enjoys running, hiking, snowboarding, and snowshoeing; and when the opportunity arises, she loves to travel and explore new destinations. With a career making maps, it's safe to say, Rebecca should never get lost!

Marine Invasion: Aquatic Invasive Species

Scott Caines, Natural Resources Technician

Qalipu Natural Resources is starting to reach the end of the 2015 Aquatic Invasive Species (AIS) research season which included green crab research and removal, and invasive tunicate monitoring in western Newfoundland.

Golden star and violet tunicates were first detected in western Newfoundland in 2013. The invasive golden star and violet tunicates are brightly coloured animals that form a spongy like film on algae, eelgrass and wharves.

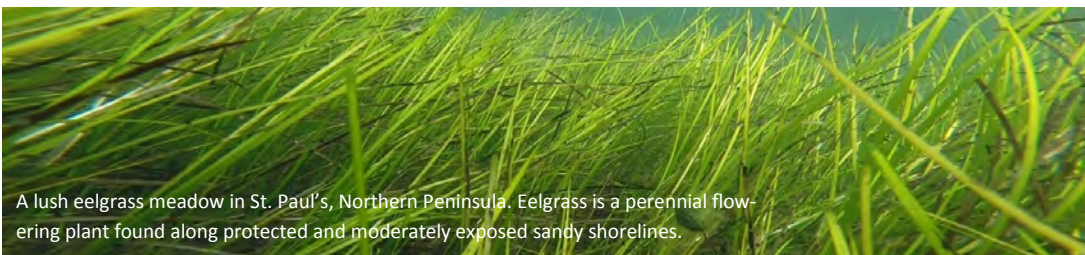


Violet tunicate (orange)

Golden star tunicate is fairly abundant in eastern Newfoundland and is found at a number of harbours in Conception, Fortune, and Placentia Bay. Prior to 2013, the violet tunicate was limited to a single harbour in Belloram, Fortune Bay. Qalipu is currently investigating the abundance of golden star and violet tunicates at three sites

in western Newfoundland: Port Aux Basques, Codroy, and Little Port Harmon. The abundance of both species appears to be lower this summer compared to 2014, suggesting that the harsh winter and cool summer this year may have reduced the growth of this species.

Both golden star and violet tunicates can be found on the submerged portions of floating docks or attached to buoys and submerged ropes around wharves. These species are known to grow on algae, such as kelp and rockweed, and recently have been found growing on eelgrass. The presence of these two species on eelgrass is thought to reduce growth and productivity, which is putting additional pressure on this important habitat. Eelgrass is a complex habitat that houses numerous invertebrate species, stabilizes coastal shores, and acts as nursery ground for numerous fish species. Both green crab and invasive tunicates have been found to negatively affect eelgrass habitat in Atlantic Canada.



A lush eelgrass meadow in St. Paul's, Northern Peninsula. Eelgrass is a perennial flowering plant found along protected and moderately exposed sandy shorelines.



Are you a Qalipu Member Seeking Employment?

Work Force Qalipu has been keeping an eye out for job openings with the Muskrat Falls/Maritime Link Project and helping to connect members with those opportunities.

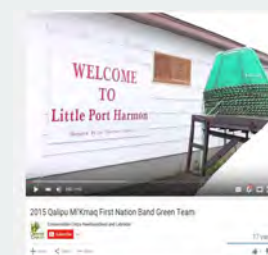
We encourage you to visit our website at www.qalipu.ca/wf/job_postings to view weekly updated job postings, and a helpful PowerPoint that will guide you through the process of registering with IBEW Local 1620 in order to be eligible for many of those jobs.

Members are reminded that keeping your ginu membership profile up to date allows us to regularly keep you informed on employment opportunities in your field.

For more information, call or email Vicki. Tel. 709-634-8611, vmacdonald@qalipu.ca

Green Crab

The Qalipu Natural Resource division, with the hard work of the Qalipu Green Team, has just finished a large scale study to determine the number of invasive green crab in Port Harmon, Bay St. George. Over 30,000 individual green crabs, weighing in at over 1000 pounds, were permanently removed from Port Harmon over a 6.5 week period in July and August, 2015.



Click this image to watch a YouTube video .

Medicine Walk-Grenfell Campus

Submitted by Kelly Anne Butler, Student Affairs Officer-Aboriginal Affairs, Student Services Grenfell Campus, MUN

"On September 17th, Qalipu's Michelle Matthews led a medicine walk around Grenfell Campus and down the adjacent trails. The group that took part included students, staff, faculty, and a few off-campus Mi'kmaq community members as well. The weather cooperated nicely, and students were even taking notes along the way! Michelle ended the walk by offering a ceremonial smudge to those who were interested. For some of the students, this was their first opportunity to do so. It was a beautiful afternoon of learning!"



Qalipu Mi'kmaq First Nation

Qalipu is a vibrant Mi'kmaq First Nation established in 2011 as an Aboriginal Band under the Indian Act. With some 24,000 members spread across many communities on the island and abroad, we are one of the largest First Nation groups in Canada.

We have been busy since our establishment. Qalipu has four office locations, representing the four regions of our dispersed communities, that are home to more than 50 employees. This dedicated group facilitates the delivery of a variety of programs and services including education and training, health benefits, employment services, environmental monitoring, and community economic development.

Our leadership, too, has been busy overseeing all of this while developing the Qalipu Business Network and pursuing connections through the Strategic Partnership Office that will help the Band not only to be an active player in the local economy, but also to provide opportunities for members and member-owned businesses.

We have focused our efforts on establishing a strong foundation upon which to build a prosperous and progressive Band; a community which cherishes and wants to share its heritage, holds the overall health and education of its members as highest priority and faces its future with confidence.

Please, keep in touch

Maw-pemita'jik Qali'pu'k is a monthly newsletter. In it, we aim to share not only the happenings of the Band but also, to help connect our dispersed communities.

If you would like to give your thoughts on what you've read here, or share an upcoming community event, achievement, news item, or anything else that may be of interest to our local aboriginal community, please get in touch:

Alison White
Marketing and Communications Coordinator
Qalipu Mi'kmaq First Nation
Tel. 709-634-5163
Email awhite@qalipu.ca

October 2015

Sun	Mon	Tue	Wed	Thu	Fri	Sat
				1	2 Nominations Close	3
4	5 Announcement of Candidates	6	7	8	9 Deadline to request a Mail-in- Ballot Application	10
11	12	13	14	15	16	17 Advance Polling
18	19	20	21	22	23 Qalipu Election 2015 Polling Day	24 Qalipu Cultural Foundation Fund- raising Event
25	26	27	28	29	30	31